

**EYE
THINK
THEREFORE
I
AM**

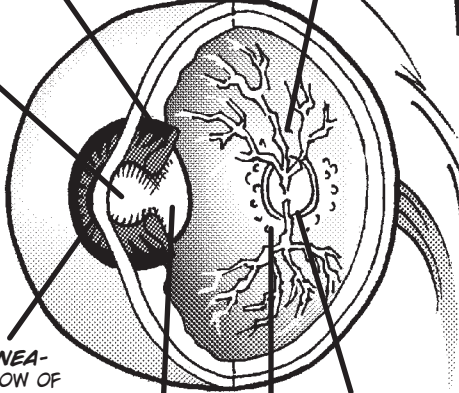
**(WEAR GOGGLES
TODAY, TO SEE
THE FUTURE.**



IRIS- THE COLORED PART OF THE EYE. IT CONTROLS THE LIGHT ENTERING BY WIDENING AND NARROWING THE PUPIL.

RETINA- MULTI-LAYERED SENSORY TISSUE LINING THE BACK OF THE EYE WITH CONES AND RODS.

PUPIL- THE OPENING IN THE CENTER OF THE IRIS.



CORNEA- WINDOW OF THE EYE. REFRACTING SURFACE, PROVIDES 2/3 OF THE EYE'S FOCUSING POWER.

LENS- FOCUSES LIGHT ONTO THE RETINA.

OPTIC NERVE- TRANSMITS ELECTRICAL IMPULSES TO THE BRAIN. TELLING US WHAT WE SEE.

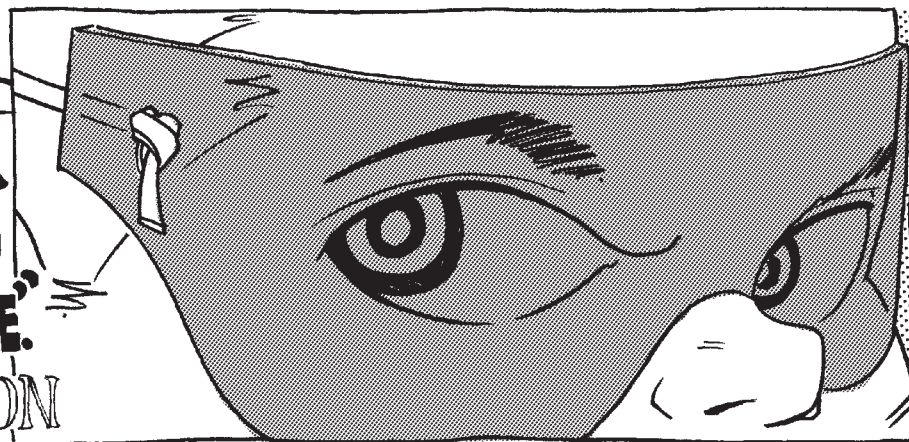
RODS AND CONES- PHOTORECEPTORS ON THE RETINA. THEY SOAK UP LIGHT AND TURN IT INTO ELECTRICAL SIGNALS FOR THE OPTIC NERVE. RODS DETECT MOTION AND LOW LIGHT. CONES SEE COLOR AND FINE DETAILS.

RECYCLE **2-LITER BOTTLE** **WASH** **OUT** **FLATTEN** **CUT** **LIDS**

CUT DOWN **MIDDLE** **DRAW** **ON FACE** **DESIGN IT**

CUT OUT **FOLD** **OVER** **SNIP** **SNIP** **HEAD** **STRAP** **USE RUBBER BANDS**

**"FOR I DID'T INTO THE FUTURE
FAR AS THE HUMAN EYE COULD SEE,
SAW THE VISION OF THE WORLD
AND ALL THE WONDER THAT COULD BE."
-ALFRED, LORD TENNYSON**



**WHEN
IT COMES
TO SAFETY
THE BEST
DEFENSE
IS A GOOD
IMAGINATION!**